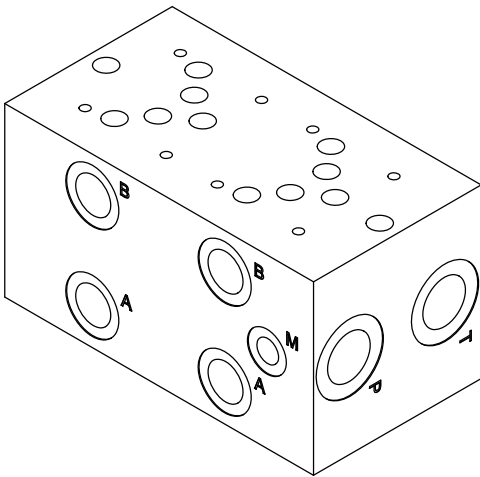
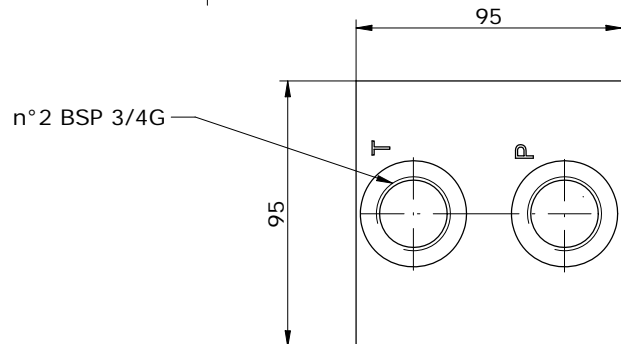
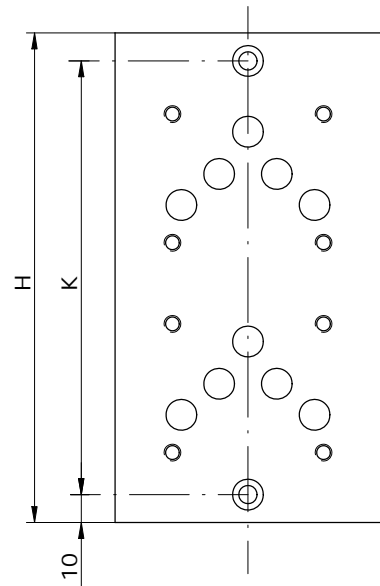
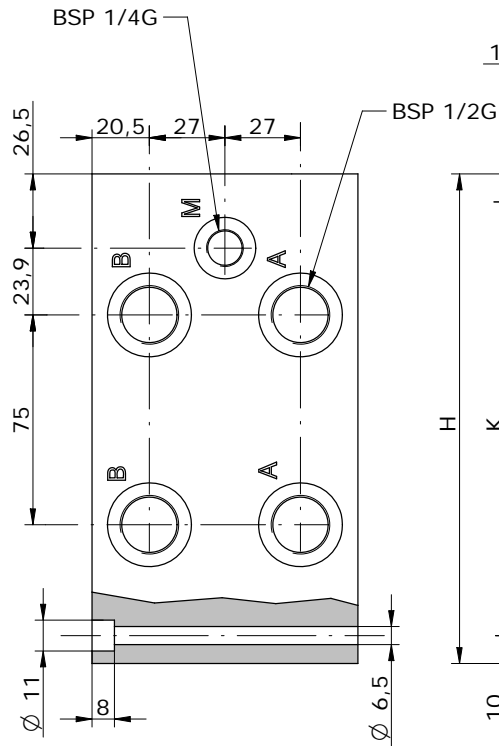
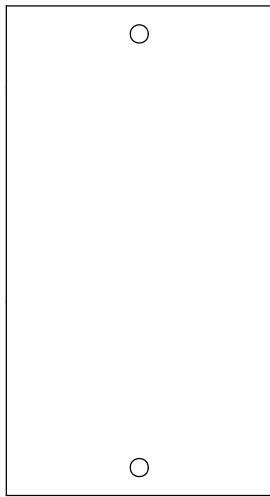
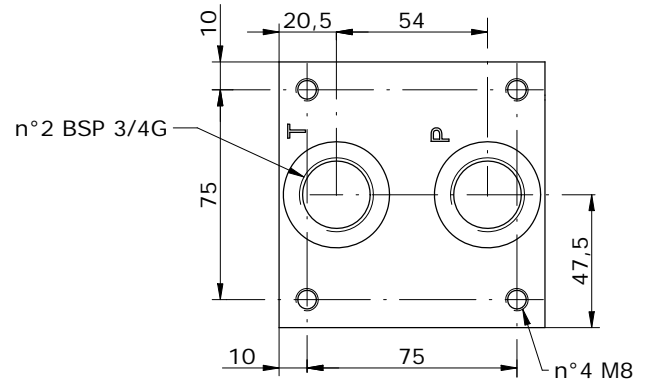
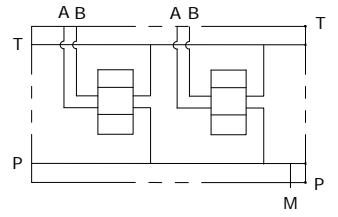


MONOBLOCCO A-B LATERALI 1/2" BSP, P-T 3/4" BSP
MONOBLOCK A-B ON SIDE 1/2" BSP, P-T 3/4" BSP



Schema idraulico
Hydraulic diagram

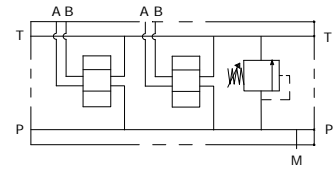
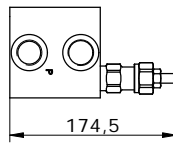
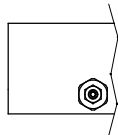
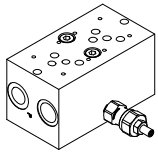


E_ 10 - 06 - 12 - ___ - 0

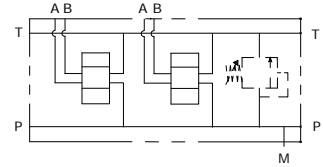
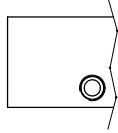
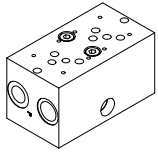
POS.	01	02	03	04	05	06
H	100	175	250	325	400	475
K	84	159	234	309	384	459

MONOBLOCCO A-B LATERALI 1/2" BSP, P-T 3/4" BSP
MONOBLOCK A-B ON SIDE 1/2" BSP, P-T 3/4" BSP

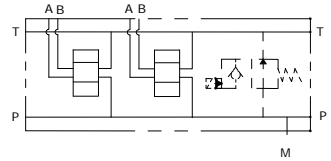
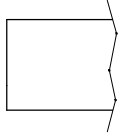
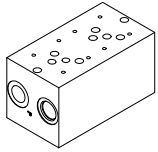
E_ 10 - 06 - 12 - ___ - 1



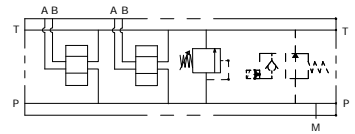
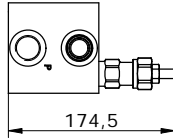
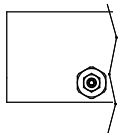
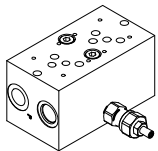
E_ 10 - 06 - 12 - ___ - 2



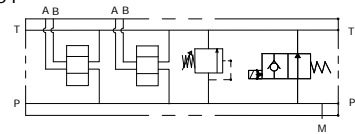
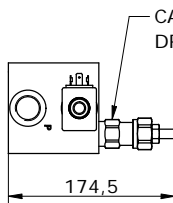
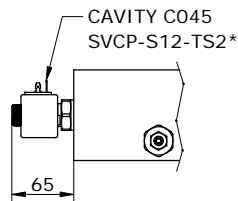
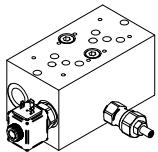
E_ 10 - 06 - 12 - ___ - 3



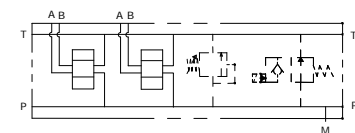
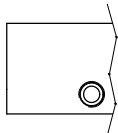
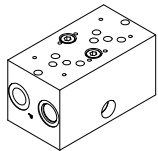
E_ 10 - 06 - 12 - ___ - 4



E_ 10 - 06 - 12 - ___ - 5



E_ 10 - 06 - 12 - ___ - 6



E_ 10 - 06 - 12 - _____

S = STEEL
A = ALUMINUM

MOUNTING POSITIONS: 01-06

0 = Без предохранительного клапана
1 = C предохранительным клапаном.
2 = RELIEF VALVE READY
3 = VENTING VALVE READY
4 = WITH R.V. AND V.V. READY
5 = WITH R.V. AND V.V.
6 = V.V. READY AND R.V. READY

0 = WITHOUT RELIEF VALVE
1 = 5-55 BAR
2 = 25-110 BAR
3 = 75-250 BAR

0 = WITHOUT RELIEF VALVE
H = HEX. HEAD SCREW K = KNOB C = COVER CAP I = NOT ADJUSTABLE



SEALS
N = BUNA
V = VITON

VENTING VALVE
000 = WITHOUT V.V.
TS2 = NORMALLY OPEN

VENTING VALVE
0 = NO MANUAL OVERRIDE
2 = PUSH AND TWIST
4 = PUSH BOTTOM

CONNECTOR TYPE
O = WITHOUT COIL
C = CAVI / LEADS
D = DIN 43650
G = DEUTSCH DT04-2P
A = AMP JUNIOR

TENSIONE / VOLTAGE
000 = WITHOUT COIL
D12 = 12 VDC
D24 = 24 VDC
D26 = 26 VDC

*see *CARTDRIGE VALVES* catalog